



5 port 4K60HZ HDMI Switch

RKV501HDR-V3.0

The image describes a 5x1 HDMI Switch 4K@60Hz, which allows five different HDMI source devices to be connected to a single HDMI display while supporting up to 4K resolution at 60 Hz. This type of switch is useful when a TV or monitor has limited HDMI inputs but multiple devices such as game consoles, media players, or computers need to share the same screen.



RGB LOGIC AV EQUIPMENT CORPORATION

No. 3, Jalan Rajawali, Singapore. -598436

Website: www.rgblogicav.com

Mail To: sales@rgblogicav.com

Ports and Indicator Lights

The switch provides 5 HDMI input ports and 1 HDMI output port, so up to five source devices can be connected and routed to one display. It includes a single power indicator LED to show when the unit is powered on, and five separate signal indicator LEDs to show which input is currently active.

HDMI and HDCP Support

This device is compatible with HDMI 1.4 and HDMI 2.0 standards, which enables it to handle both standard Full HD and modern 4K video formats. It also supports HDCP 1.4 and HDCP 2.2 copy-protection protocols, so it can work with most Blu-ray players, streaming boxes, and other protected digital content sources.



Video and Audio Capabilities

The switch supports 12-bit Full HD video, 3D video, and 4K resolution at 30 or 60 Hz, making it suitable for UHD and HDR content on compatible displays. It can handle standard digital audio formats as well as DSD (Direct Stream Digital) and HD (HBR) audio, ensuring high-quality sound transmission alongside the video signal.

Signal Specifications and Resolutions

The specified I/O TMDS signal range is 0.7–1.2 Vpp, and the DDC signal level is 5 Vpp, which are typical values for reliable HDMI signal integrity over standard cable lengths. Supported HDMI output resolutions include 480i, 480p, 576i, 576p, 720p, 1080i, 1080p, 1920×1200, and 3840×2160 (4K) at various refresh rates including 24, 25, 30, 50, and 60 Hz depending on the mode.

Switches easily any 5 HDMI source to 1 HDMI output



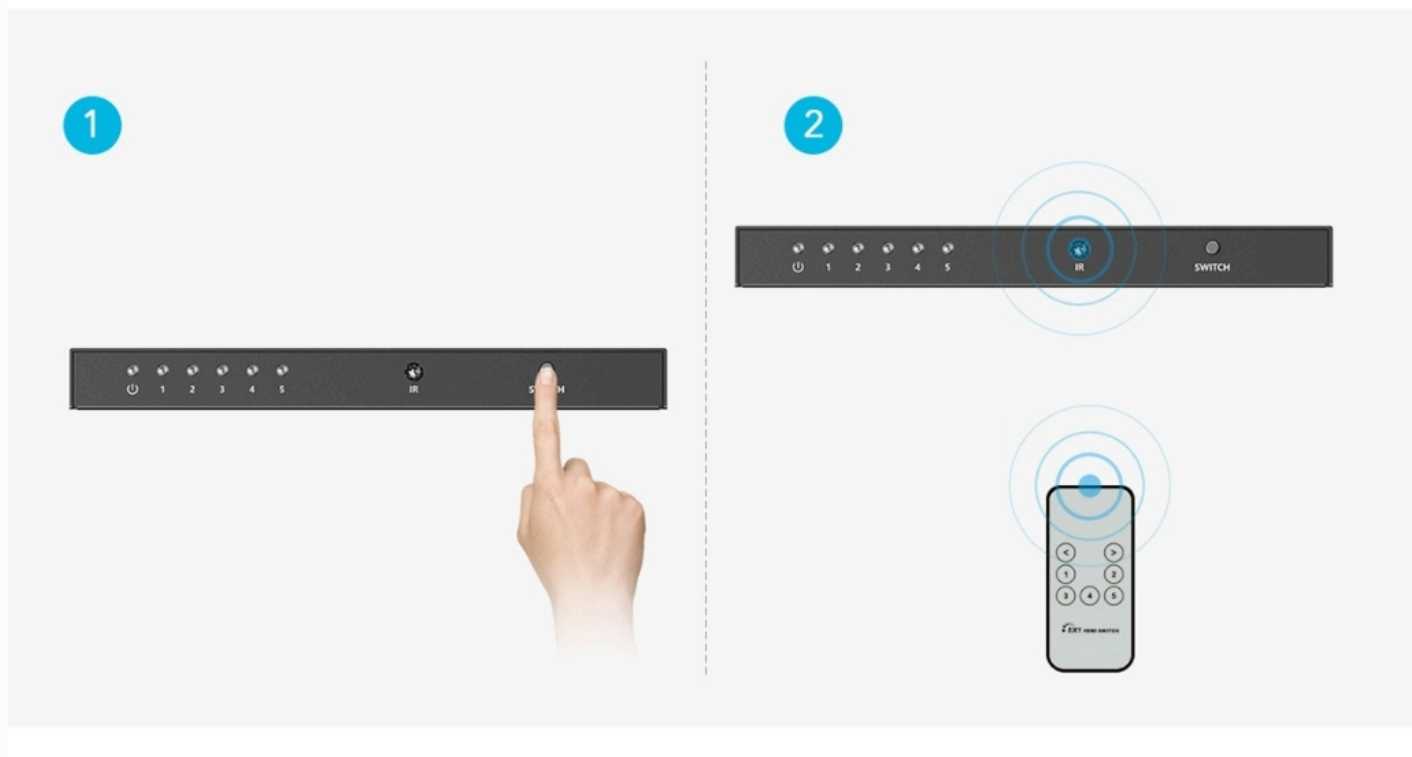
Plug and play, supports power-off memory



Supports HDMI 3D visual effects,
Dolby/DTS/DTS-HD/LPCM audio synchronization output



Two Modes Switch



Specifications

- Product type: 5x1 HDMI switch that connects five HDMI sources to one HDMI display, supporting up to 4K resolution at 60 Hz.
- Input ports: 5 × HDMI.
- Output ports: 1 × HDMI.
- Power indicator: 1 × LED to show device power status.
- Signal indicators: 5 × LEDs to show active HDMI input channels.
- HDMI version support: Compatible with HDMI 1.4 and HDMI 2.0 standards.
- HDCP support: Compatible with HDCP 1.4 and HDCP 2.2 content protection.
- Video formats: Supports 12-bit Full HD video, 3D video, and 4K×2K at 30/60 Hz ultra HD video.
- Audio formats: Supports standard digital audio plus DSD (Direct Stream Digital) and HD (HBR) audio.
- I/O TMDS signal level: 0.7–1.2 Vpp.
- I/O DDC signal level: 5 Vpp.
- Supported resolutions: 480i, 480p, 576i, 576p, 720p, 1080i, 1080p, 1920×1200, and 3840×2160 at 24/25/30/50/60 Hz; also 4096×2160 at 24/25/30/50/60 Hz.

I/O Ports

